

Supplementary Material

CK5/6 and GATA3 defined phenotypes of muscle-invasive bladder cancer: impact in adjuvant chemotherapy and molecular subtyping of negative cases

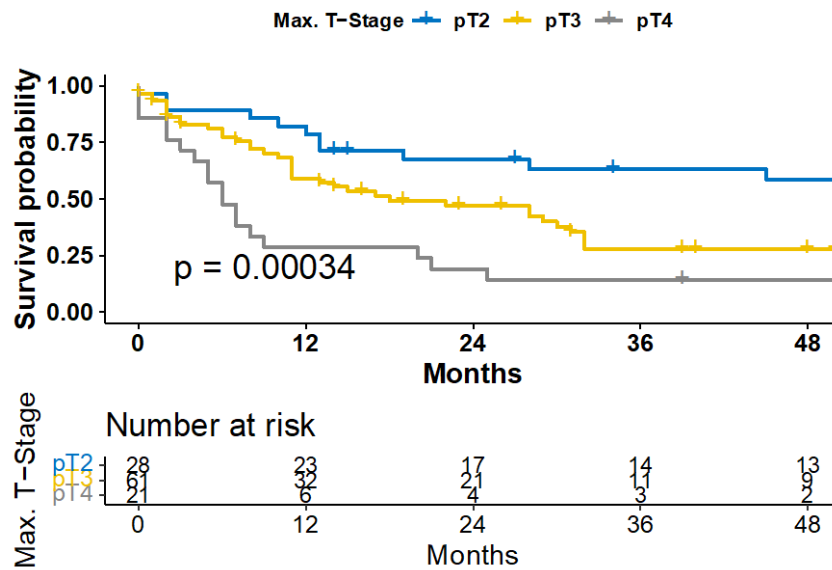


Figure 1: Kaplan-Meier curve for overall survival for all patients stratified by pathological tumor stage.

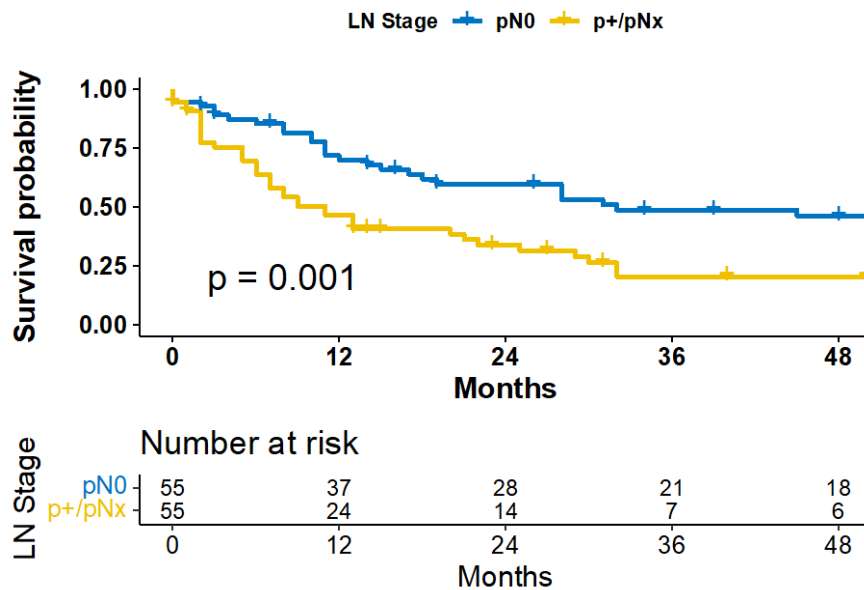


Figure 2: Kaplan-Meier curve for overall survival for all patients stratified by lymph node status

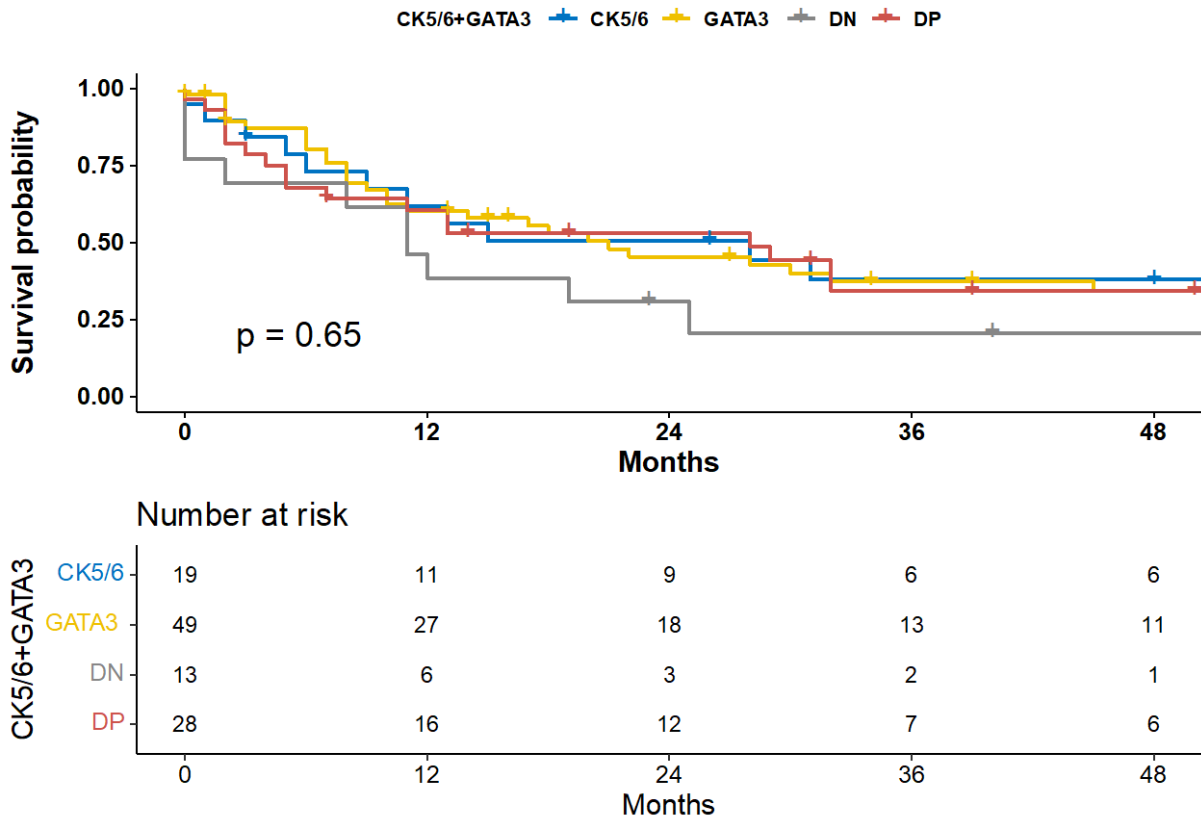


Figure 3: Kaplan-Meier curve for overall survival for patients stratified by IHC markers. DN = double negative; DP = double positive

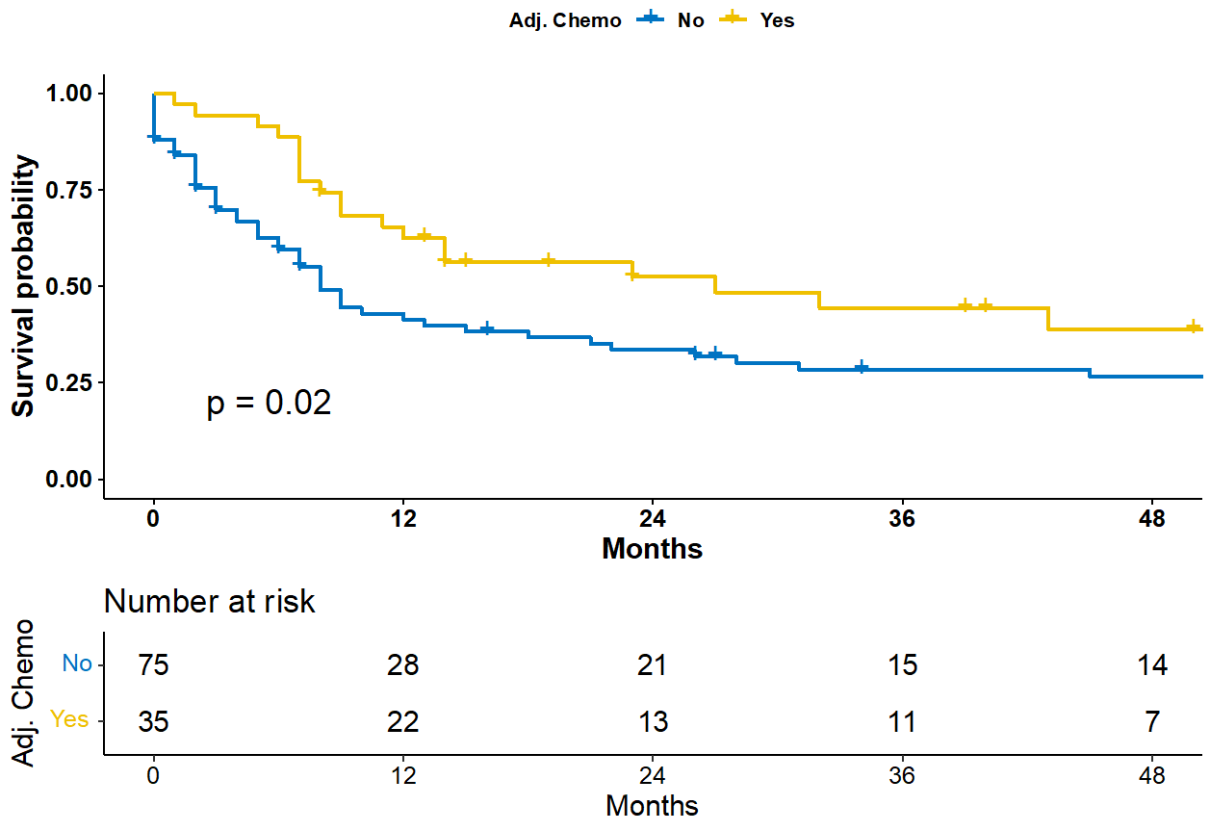


Figure 4: Kaplan-Meier curve for disease-free survival for patients with and without adjuvant chemotherapy.

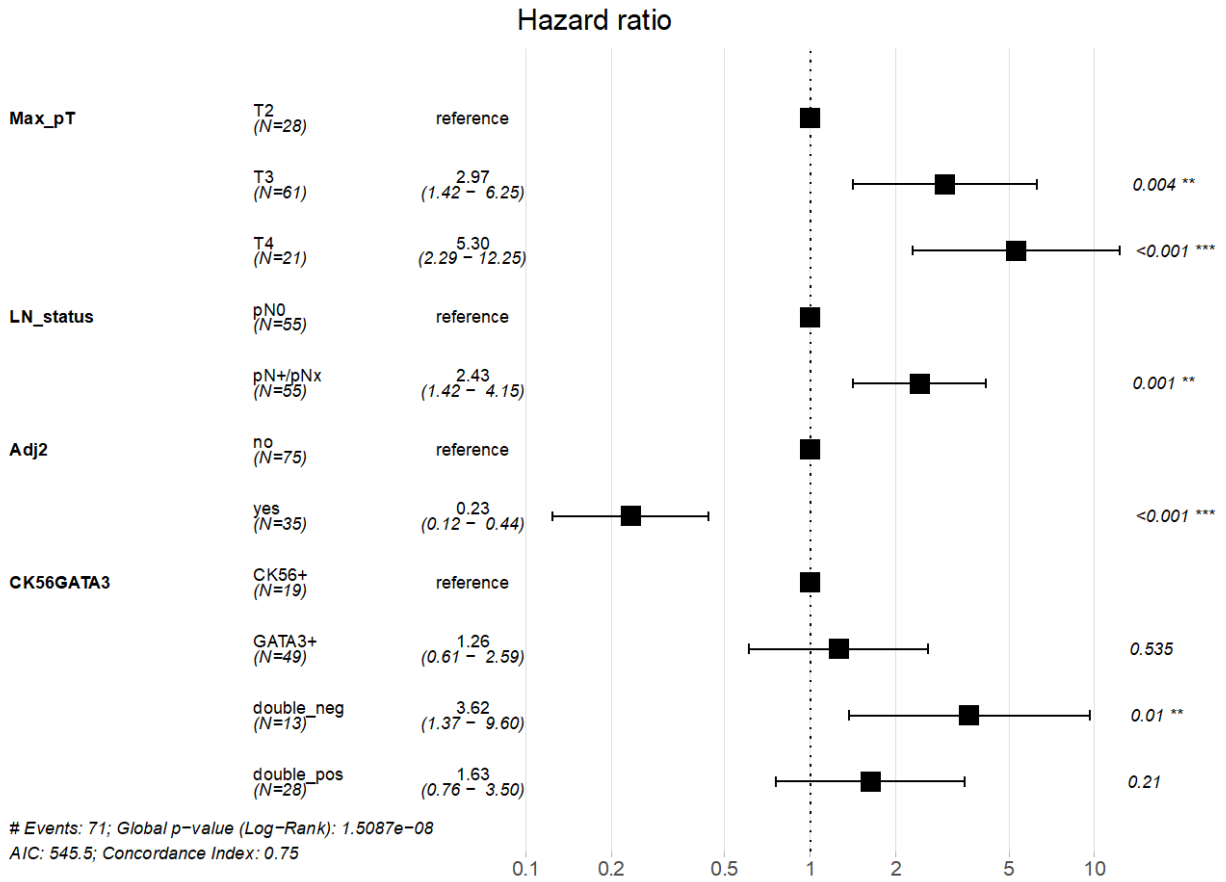


Figure 5: Multivariate cox-regression model for disease-free survival adjusting for tumor and LN stage, adjuvant chemotherapy, and the IHC-markers CK5/6 and GATA3. LN = lymph node; Adj2 = at least two cycles of adjuvant chemotherapy