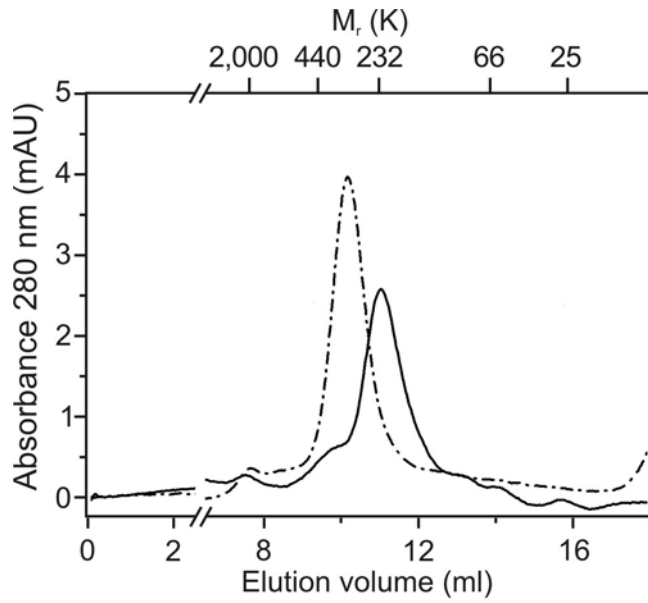


**Supplemental Figure 1:**

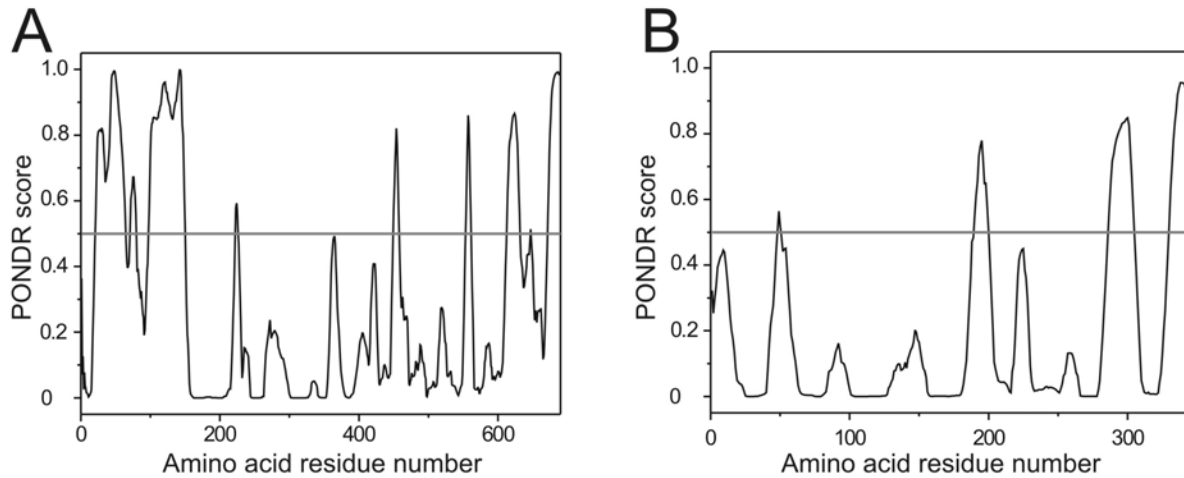
Size-exclusion chromatography of purified GARP2 using analytical Superdex-200. Elution profiles of purified GARP2 under normal (—) and denaturing conditions (6M guanidinium HCl)(- - - - -).



Supplementary Fig. 1

### Supplemental Figure 2:

Sequence analysis of the A1 subunit of the CNG channel and peripherin. *A*, PONDR of A1 subunit of the bovine rod cGMP-gated channel; *B*, PONDR of bovine peripherin. Note the pronounced disordered regions in the N-terminus of the A1 subunit and the C-terminus of peripherin.



Supplementary Fig. 2

**Supplemental Table. Amino acid frequencies of bovine GARPs compared with those of ordered and disordered proteins**

Amino acid	GARP1	GARP2	Intrinsically unstructured proteins	Globular proteins <sup>a</sup>
<i>% Disorder promoting amino acids</i>				
Pro (P)	10	17.1	12.07	4.61
Glu (E)	23.9	12.7	14.26	5.98
Lys (K)	4.2	3.3	10.43	6.05
Ser (S)	6.9	6.7	6.91	6.31
Gln (Q)	8.5	8.0	4.46	3.69
<i>% Order promoting amino acids</i>				
Tyr (Y)	0	0	1.42	3.64
Phe (F)	0.5	0.3	1.66	3.95
Cys (C)	0.7	1	0.61	1.64
Ile (I)	2	2.7	3.67	5.43
Asn (N)	0	0.7	2.06	4.66
Leu (L)	6.2	8.7	5.44	8.37
Trp (W)	1.3	2.3	0.32	1.55

<sup>a</sup>Data from Ref. (42)